



NEWS FROM SIDWELL

PROVIDER OF AERIAL PHOTOGRAPHY, MAPPING SERVICES AND GEOGRAPHIC INFORMATION SYSTEMS

15th Annual Sidwell Users Conferences Held

Sidwell hosted its 15th annual conferences for users of Sidwell systems in Normal, Ill., and Des Moines, Iowa, on January 28 and February 4, 1997, respectively.

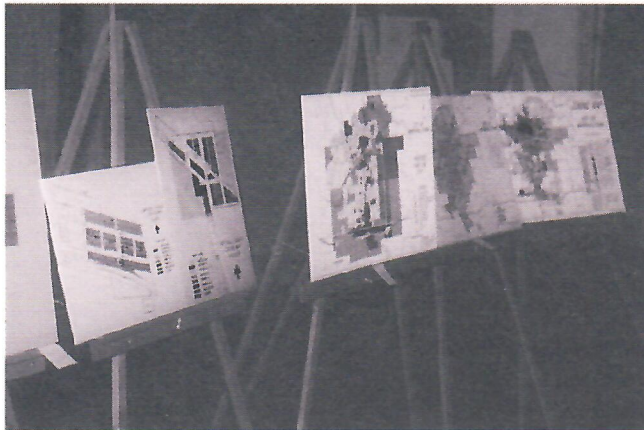
During these two days Sidwell staff members delivered presentations on a variety of mapping and geographic information system (GIS)-related topics.

In his address welcoming attendees to the Iowa conference, Sidwell

Vice President of Operations Neal Carpenter told the audience that the company's mission in sponsoring the event was "to make this an educational day for you and also to give us an opportunity to leave with some new information [and] insight on how we can serve you better."



Sidwell GIS Customer Engineer Randy Kobiella discusses an exercise with Hardin County Assessor Betty Donner (left) and Buchanan County Assessor Virginia Sleeper during a cadastral mapping workshop at the Iowa users conference.



Maps on display as part of a "Map Gallery" at the Iowa conference showcase samples of mapping work submitted by Sidwell clients.

in Monroe County, which recently entered into a contract with Sidwell calling for parcel mapping services and development of a countywide GIS.

"The change that will be taking place will be enormous," said Monroe County Lead

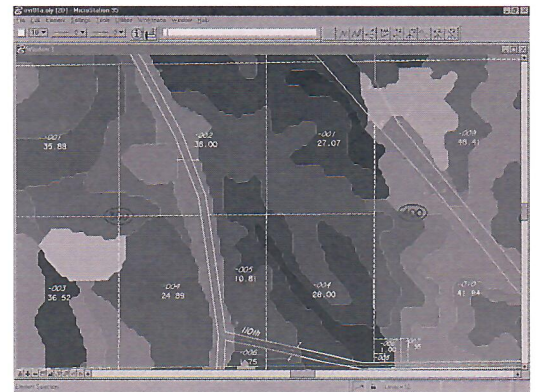
The Iowa conference, according to first-time attendee Don Cook, "was an excellent presentation of mapping-related topics. The variety of presentations provided current information for users at all levels of interest."

Cook is the assessor

Farmland Assessment Solution Available

Sidwell has developed a software solution to assist in the valuation of agricultural real estate. Called FARMS (for *F*armland Assessment and *R*eport Management System), the software comprises a GIS application designed to support the conversion and maintenance of digital map data layers for the purpose of assessing agricultural land parcels.

Sidwell's FARMS application uses GIS functions to determine new acreage measurements created from a spatial polygon overlay of parcel maps, soils maps and land use maps. The system then inserts these calculations into



With Sidwell's FARMS application, thematic maps can be created to graphically portray soil types, land use, productivity indexes, or valuation.

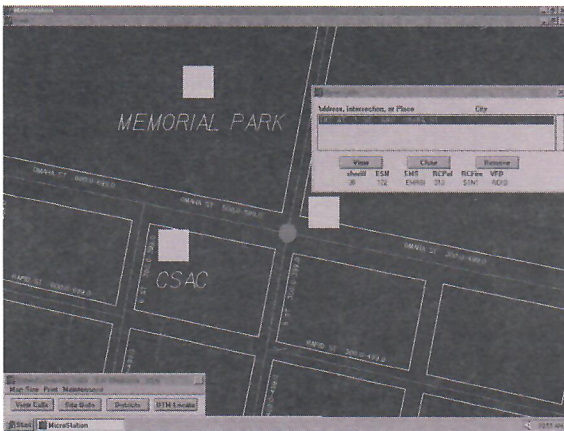
selected state-specific agricultural productivity formulas to bring the calculations to valuation. The system can generate reports detailing computed valuations based on soil types and acreage, as well as create thematic maps graphically portraying soil types, land use, productivity indexes, or valuation.

FARMS relies on Bentley Systems, Inc. MicroStation GeoGraphics™ software to create topology, and can be integrated with a comprehensive countywide GIS based on Intergraph MGE or Bentley Systems, Inc. MicroStation® software.

MicroStation is a registered trademark and MicroStation GeoGraphics is a trademark of Bentley Systems, Incorporated.

Real-Time Mapping System Supports 9-1-1 Dispatch Operation

Operating around the clock, the Emergency Services Communications Center (ESCC) in the Pennington County, S.D., seat of Rapid City, dispatches more than 50 emergency response agencies, and last year dispatched 191,210 "events." Managing a large volume of emergency calls and providing dispatch services for so many



Sidwell's GIS software for emergency response dispatch applications provides on-screen images of mapped locations.

agencies—some of whose jurisdictional boundaries overlap—is according to ESSC Assistant Director Ted G. Ruffedt Jr., "very complex," and reason the center sought an automated mapping solution to replace the paper maps it had been relying on.

To implement a new mapping system, the ESSC

called on Sidwell to integrate with the center's computer-aided dispatch (CAD) system existing map data from a mapping system developed earlier by Sidwell for use by the Pennington County Department of Equalization; create additional map data layers; and build in GIS functionality to support 9-1-1 dispatch operations.

Through GIS development and database integration services, Sidwell offers automated mapping solutions to support 9-1-1 dispatch operations by helping dispatch personnel to quickly identify source locations of emergency calls. In addition to developing software applications which enable dispatch operations to access GIS-resident maps featuring locations of roads and places, and assigned address ranges, Sidwell can provide digital orthophoto, planimetric and topographic mapping which can supply additional graphic information when incorporated into a GIS.

The GIS application implemented at the ESSC enables dispatchers to receive address data through an interface with the center's CAD system which in turn is linked to the center's enhanced 9-1-1 system. After receiving address data, the application software performs a search of addresses to find and present on screen a map image showing the approximate location identified as the source of the call. Alternately, the system permits dispatcher-initiated searches to find a mapped location in the database by entering information obtained verbally from a

caller. Additionally, the system can display geographic response districts graphically on screen; as well as calculate "first-responder" districts directly from the maps.

New Customer Engineer

Some of our readers might have met her by now—perhaps during a GIS "demo" at a trade show or maybe during a visit to their jurisdiction in connection with a project. In any case,



Tracy Engel

The Sidwell Company is pleased to have Tracy Engel as a member of its GIS Customer Engineering staff. Tracy joined the company last year after having served as a project engineer/team leader with the Tennessee Valley

Authority. She is a native of Cedar Falls, Iowa, and holds a Bachelor of Arts degree in International Business, and a Master of Science degree in Geography.

The Sidwell Customer Engineering staff provides clients with a variety of technical services, including product deliveries, system installation and integration, and training.

Conference Calendar

Look for Sidwell representatives at the company's booth on the following dates at these upcoming industry events:

May 21-22, 1997, Chicago Metropolitan APWA Conference & Equipment Exposition, Villa Park, IL.

June 10-11, 1997, North Central Regional Association of Assessing Officers, Mt. Vernon, IL.

September 12-13, 1997, Illinois Municipal League, Chicago.

September 15-16, 1997, International Association of Assessing Officers, Toronto.

For more information on Sidwell's GIS solutions for emergency response dispatch, Sidwell's FARMS application, or Sidwell's mapping services, contact the company at P.O. Box 920, West Chicago, IL 60186-0920; (630) 231-0206, fax: (630) 231-8206.

The Tech Desk

Courtesy of Sidwell's GIS Customer Engineering Department, this column has been established to offer discussion and tips about mapping techniques, GIS applications and related topics. If you have a technical mapping or GIS question or topic *you'd* like to see addressed here, direct your inquiry via fax to Senior GIS Customer Engineer Mark Dupree at (630) 231-8206, or via e-mail at mdupree@sidwellco.com. Of course, due to space limitations, we may not be able to respond to all inquiries received.

Encountering the "Exotic"

When performing mapping tasks, have you noticed that square subdivisions with perpendicular roads seem like candidates for an "endangered list" with newer subdivisions typically featuring more exotic names and a greater number of curves and strangely shaped lots? It seems the more exotic the name the more curves and weird shaped lots there will be!

But don't panic...just remember the number one rule in mapping: Work big to small. Plot out the largest features first. Complete each feature before beginning the next. Adhering to the following rules should help you avoid trouble, and might even have you begging for rougher subdivisions!

1. Review the whole subdivision
 - a. Look at how the plat ties into the existing occupation and surrounding parcels.
 - b. Read the legal to locate the outside boundary of the subdivision
2. Construct the outside boundary of the subdivision.
3. Draft the new road centerlines.
4. Build the road right-of-way by using your new centerline network.
5. Plot out the lot lines while keeping in mind how they associate with the surrounding parcels.
6. Fill in the subdivision name, road names, block and lot numbers.
7. Fill in the parcel numbers.
8. Compare your plot with the subdivision plat for one final check.

Sidwell Staff Members Attain Professional Designations

Sidwell Photogrammetric Mapping Supervisor Jim Farver was recently granted the Certified Photogrammetrist designation by the American Society for Photogrammetry and Remote Sensing. Attaining this certification, according to Sidwell



James Farver

Manager of Photogrammetry Gary Lobdell, also a Certified Photogrammetrist, "requires demonstrating the proper combination of education, work experience and professional responsibility."

Senior GIS Technician Donald Dieckmann, Senior GIS Customer Engineer Mark Dupree, GIS Maintenance Supervisor Karen Fouts, and Senior GIS Supervisor Michael Tesch were recently awarded the Cadastral Mapping Specialist (CMS) designation by the International Association of Assessing



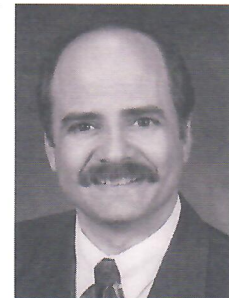
Donald Dieckmann

Officers. According to Sidwell Vice President of Operations Neal Carpenter, who himself attained the CMS designation in 1992, "The CMS designation shows a professionalism in cadastral mapping, and is consistent with

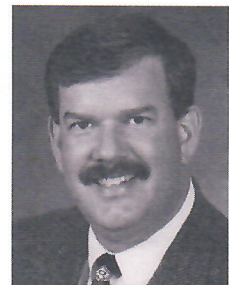


Karen Fouts

Sidwell's philosophy of employing the very best people in the industry."



Michael Tesch



Mark Dupree

Users Conferences from page 1

Engineering Technician John Fletchall, of the implementation of the GIS in the county. "And the way I look at it, any information we can get will be helpful. That's why we decided to attend the users conference. We really didn't know what to expect out of the conference when we went, but the results were good. We were exposed to questions and problems faced by actual day-to-day users and got to hear how to correct them or ways to avoid them. The conference itself was very informative." Sidwell conference instructors, Fletchall added, "presented the information to us in a very professional manner but yet down to earth and understandable." The next Sidwell Illinois users conference is set for April 21, 1998; and the 1998 Iowa conference is scheduled for April 28.



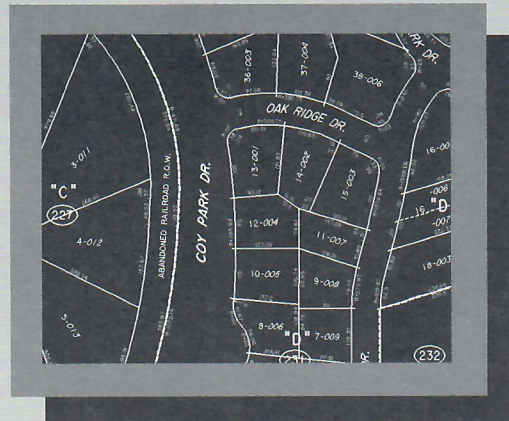
THE SIDWELL COMPANY

28W240 North Avenue
P.O. Box 920
West Chicago, IL 60186-0920

Considering a GIS Project?

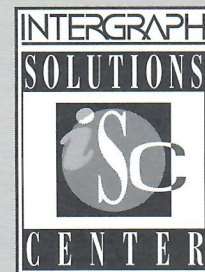
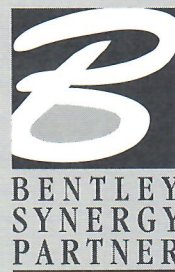
The Sidwell Company can create and maintain a geographic information system (GIS) to meet a variety of application needs. And Sidwell's parcel mapping expertise can be effectively applied to GIS and data conversion projects to support a variety of local government functions.

In addition to GIS development experience, Sidwell offers aerial photography, and photogrammetric services including topographic, planimetric and digital orthophoto mapping. For more information on Sidwell systems and services, contact:



THE SIDWELL COMPANY

28W240 North Avenue,
West Chicago, IL 60185
(630) 231-0206 Fax (630) 231-8206



Bentley and the "B" Bentley logo are trademarks of Bentley Systems, Incorporated, and Intergraph and the Intergraph logo are registered trademarks of Intergraph Corporation.